

York Township

Floodplains & Wetlands



Comprehensive
Plan Update

Legend

Boundaries

- York Township
- Boroughs
- Watershed Boundaries and Names

Transportation Network

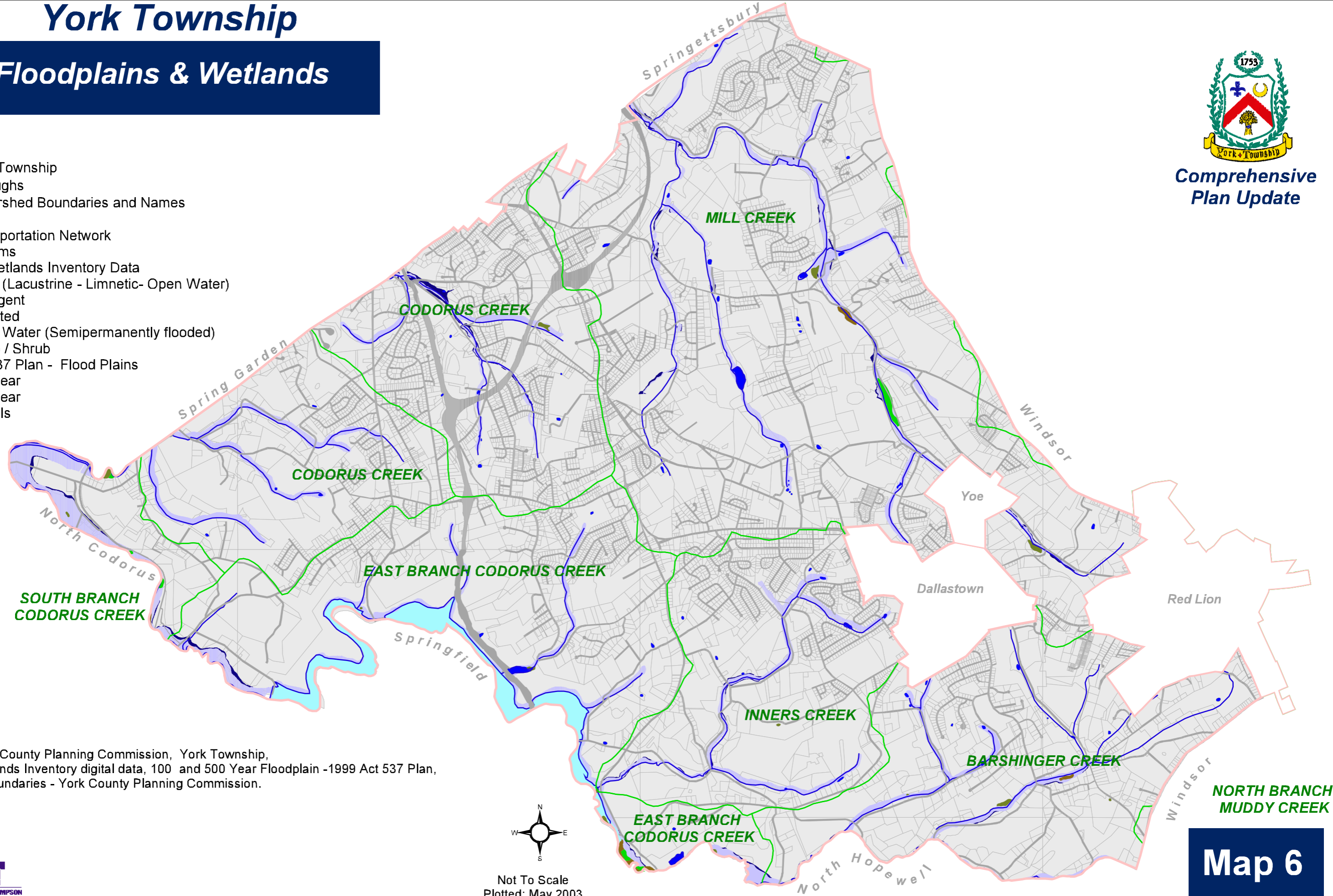
Streams

National Wetlands Inventory Data

- Lake (Lacustrine - Limnetic- Open Water)
- Emergent
- Forested
- Open Water (Semipermanently flooded)
- Scrub / Shrub

1999 Act 537 Plan - Flood Plains

- 100 Year
- 500 Year
- Parcels



Sources: York County Planning Commission, York Township, National Wetlands Inventory digital data, 100 and 500 Year Floodplain -1999 Act 537 Plan, Watershed Boundaries - York County Planning Commission.



Not To Scale
Plotted: May 2003

