

York Township

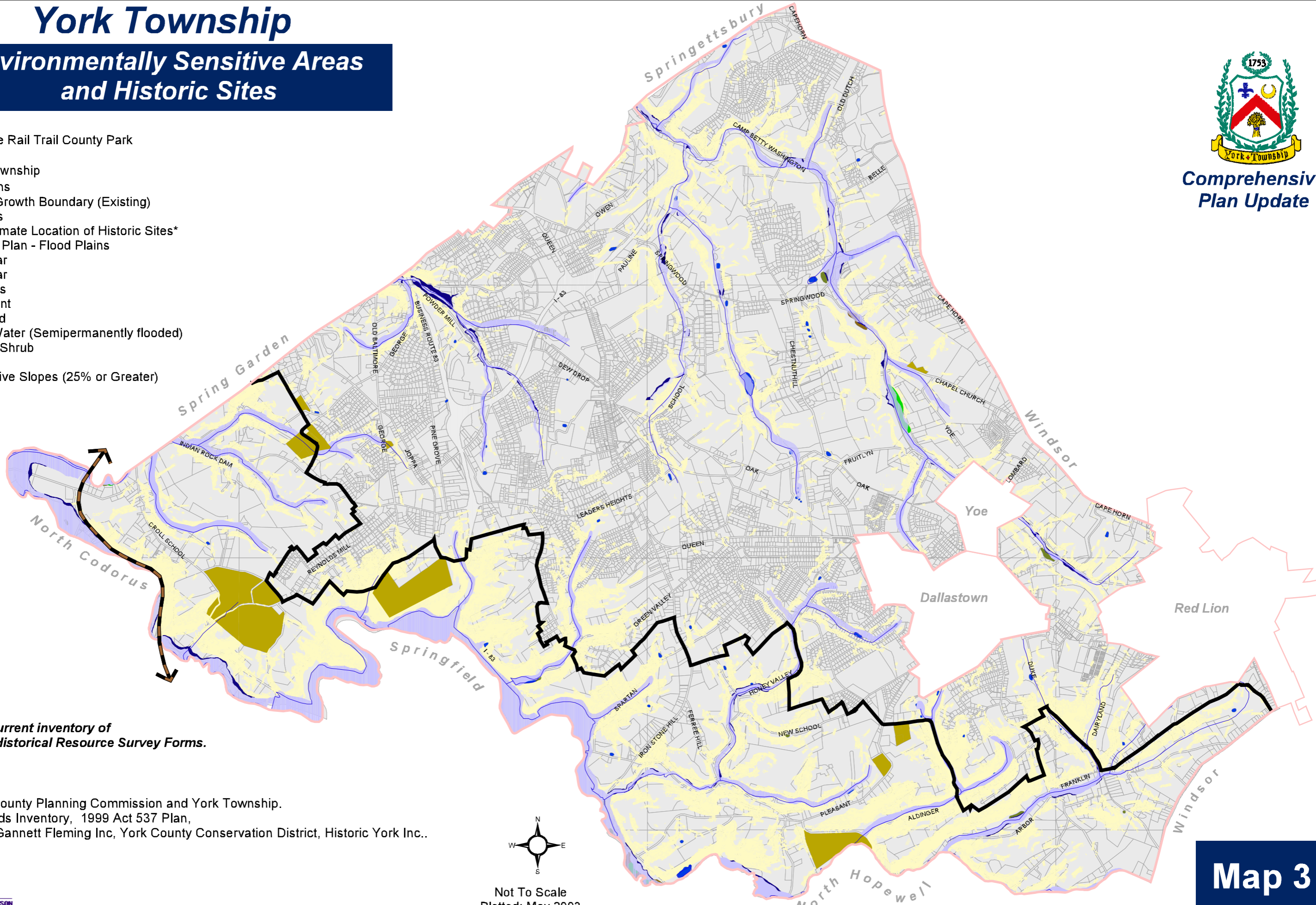
Environmentally Sensitive Areas and Historic Sites



Comprehensive
Plan Update

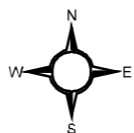
Legend

- Heritage Rail Trail County Park
- Boundaries**
- York Township
- Boroughs
- Urban Growth Boundary (Existing)
- Streams
- Approximate Location of Historic Sites*
- 1999 Act 537 Plan - Flood Plains**
- 100 Year
- 500 Year
- NWI Wetlands**
- Emergent
- Forested
- Open Water (Semipermanently flooded)
- Scrub / Shrub
- Prohibitive Slopes (25% or Greater)
- Parcels



**Note: Using current inventory of Pennsylvania Historical Resource Survey Forms.*

Sources: York County Planning Commission and York Township.
National Wetlands Inventory, 1999 Act 537 Plan,
Steep Slopes - Gannett Fleming Inc, York County Conservation District, Historic York Inc..



Not To Scale
Plotted: May 2003